

감염병 방역 물자 및 동선 추적관리 국제표준 (JTC 1/WG 11)

GISG 2021 - 글로벌 표준화기구 워크숍, 2021년 11월 11일, 서울 양재 엘타워



TEST



TRACE



TREAT

K-방역모델 국제표준화 – ETRI 수행



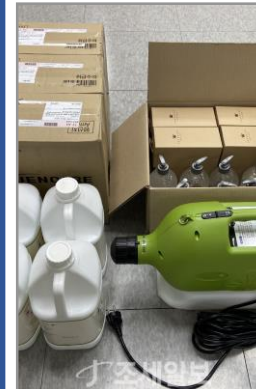
모바일 자가격리관리 앱(App)의
요구사항



자가진단 결과 및 문진 결과의
전자건강기록(HER) 간 연동 방법



감염병 확진자의 동선 추적을
위한 기능 요구사항 및 개인정보
보호 가이드라인



감염병 필수 진단기기.의약품.
방역품.개인보호장비(PPE)의 재고.
유통.물류 관리 플랫폼 요구사항

PHE 시티 서비스 플랫폼

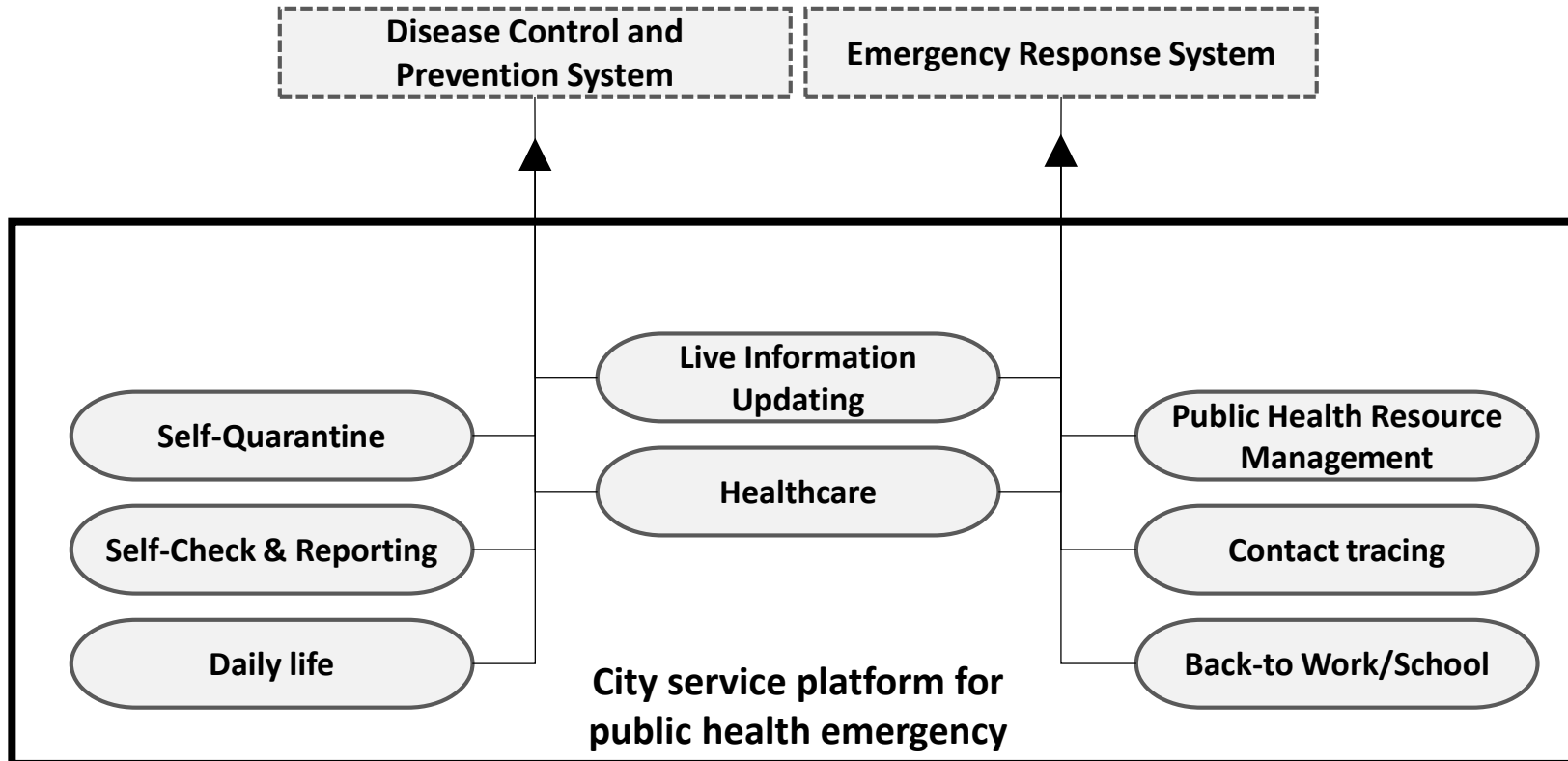
1
TEST

2
TRACE

3
TREAT

ISO/IEC 5153

City service platform for public health emergencies



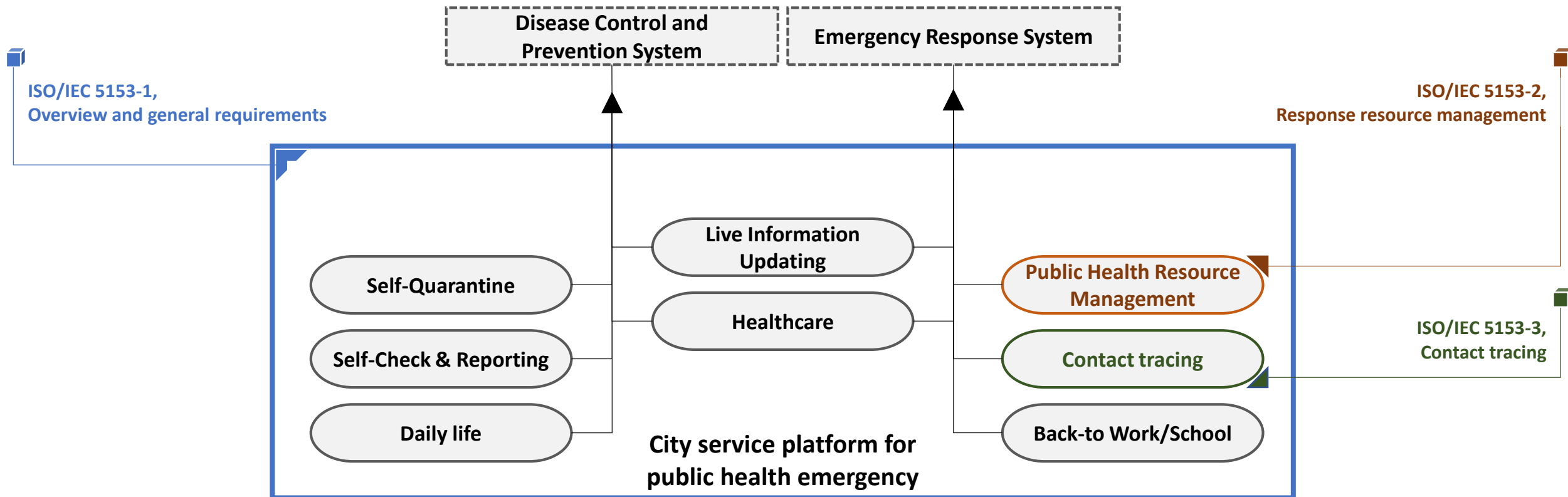
Source: Figure 1 – City service platform for public health emergency,
ISO/IEC WD 5153-1

ISO/IEC 5153 구조

1
TEST

2
TRACE

3
TREAT

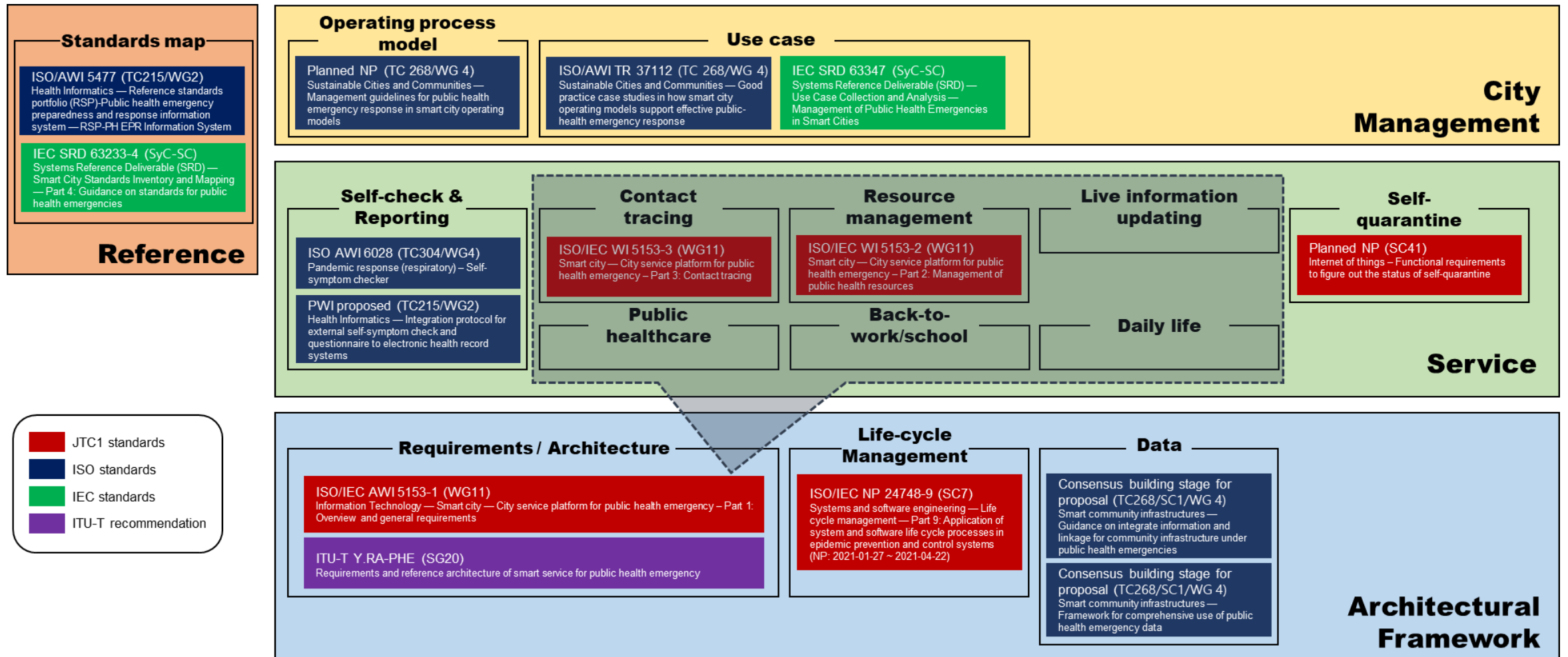


PHE 표준 맵

1
TEST

2
TRACE

3
TREAT



Part 1 현황


1
TEST


2
TRACE

3
TREAT

ISO/IEC AWI/WD 5153-1

City service platform for public health emergencies –
Part 1: Overview and general requirements

Stage 

Stage	Version	Description	Edit draft	Target date	Limit date	Started	Status
20.00	1	New project registered in TC/SC work programme				2020-08-05	Current
20.20		Working draft (WD) study initiated					Awaiting
20.60		Close of comment period					Awaiting
20.99		WD approved for registration as CD					Awaiting
30.00		Committee draft (CD) registered		2021-06-30			Awaiting
40.00		DIS registered		2022-05-03	2022-08-05 		Awaiting
60.60		International Standard published		2023-05-09	2023-08-05		Awaiting

Show all stages 

방역물품, 관리가 문제

1  TEST
2  TRACE
3  TREAT

Coronavirus fears lead to worldwide mask shortages

By Hannah Zhang, CNN Business

Updated 2310 GMT (0710 HKT) February 7, 2020



CNN, Feb. 07, 2020

Health Care Workers Still Face Daunting Shortages of Masks and Other P.P.E.

Frontline medical personnel in hospitals urging the incoming Biden administration to increase manufacturing equipment.

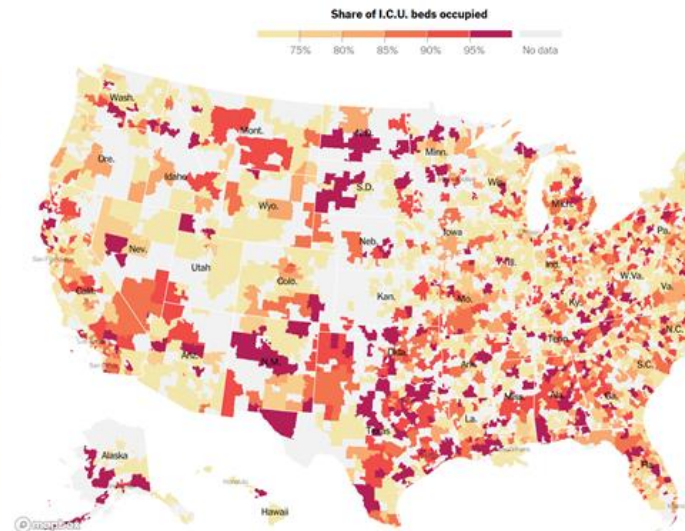


A nurse at a hospital in Green Bay, Wis., donned a protective gown last month. *AP Photo/Mark Schmitt*

The New York Times, Dec. 20, 2020

'There's No Place for Them to Go': I.C.U. Beds Near Capacity Across U.S.

By Lauren Leatherby, John Keefe, Lucy Tompkins, Charlie Smart and Matthew Conlen Dec. 9, 2020



Source: New York Times analysis of U.S. Department of Health and Human Services data. Note: Shows 7.

The New York Times, Dec. 09, 2020

California hospitals near breaking point as Covid cases soar

State short on ICU beds and healthcare workers amid 70% increase in ICU admissions in two weeks



▲ People wait in line at a testing center in Los Angeles on Tuesday. Photograph: Frederic J Brown/AFP/Getty Images

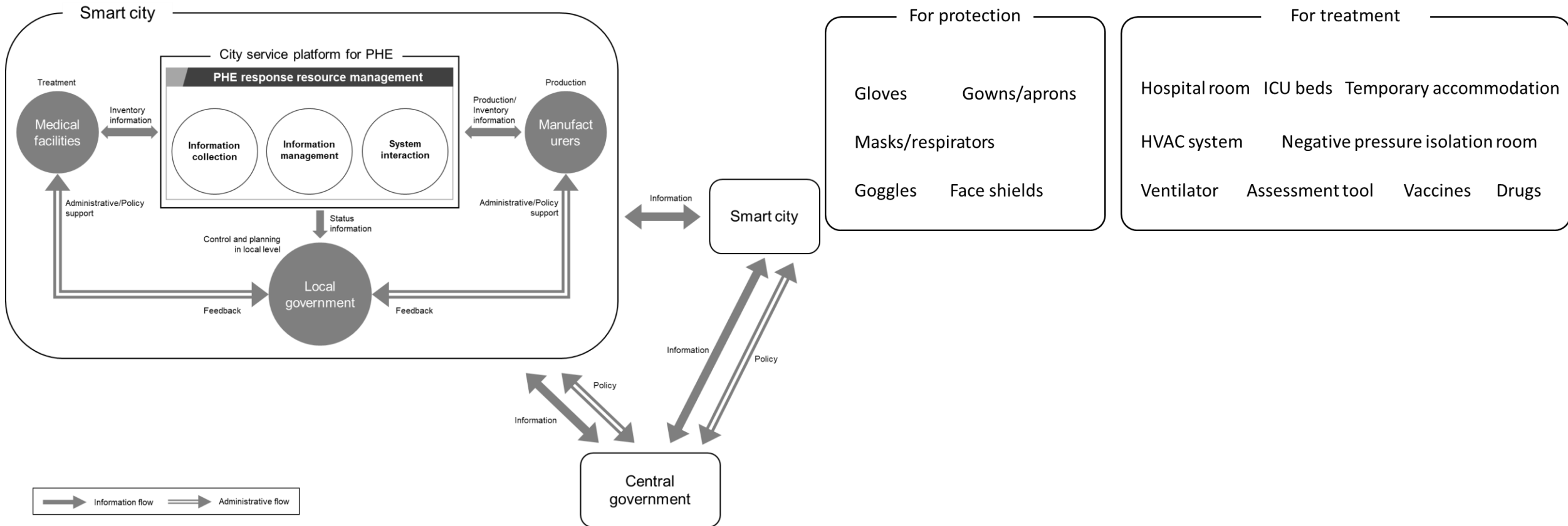
The Guardian, Dec. 08, 2020

방역물품

1 TEST

2 TRACE

3 TREAT



Part 2 현황



ISO/IEC PWI 5153 – 2 City service platform for public health emergencies – Part 2: Response resource management



ISO/IEC JTC 1/WG 11 N 1312

ISO/IEC JTC 1/WG 11 "Smart cities"
Convenorship: SAC
Convenor: Qian Heng Mr



Revised WD of PWI 10311-2 City service platform for public health emergencies
—Part 2: Response resource management—Clean version

Document type	Related content	Document date	Expected action
Project / Draft	Project: ISO/IEC PWI 10311-2	2021-10-01	INFO

Description

Submitted by Changkyu Lee.

© ISO 2021 – All rights reserved

ISO/IEC #####-#:###(X)

ISO/IEC JTC 1/WG 11

Secretariat: ANSI

ISO #####-#:###(X)

Information technology – Smart City – City Service Platform for
Public Health Emergencies – Part 2: Response resource
management

Contents

Foreword.....	iv
Introduction.....	v
1 Scope.....	1
2 Normative references.....	1
3 Terms and definitions.....	1
4 Overview.....	2
5 PHE response resource management in city service platform.....	3
6 Functional requirements of PHE response resource management.....	4
6.1 Information collection.....	4
6.2 Information management.....	4
6.3 System interaction.....	4
Annex A (informative) Annex title e.g. Example of a figure and a table.....	5
Bibliography.....	8

WD stage

Warning for WDs and CDs

This document is not an ISO International Standard. It is distributed for review and comment. It is subject to change without notice and may not be referred to as an International Standard.

Recipients of this draft are invited to submit, with their comments, notification of any relevant patent rights of which they are aware and to provide supporting documentation.

To help you, this guide on writing standards was produced by the ISO/TMB and is available at
<https://www.iso.org/iso/how-to-write-standards.pdf>

A model manuscript of a draft International Standard (known as "The Rice Model") is available at
https://www.iso.org/iso/model_document.rice_model.pdf

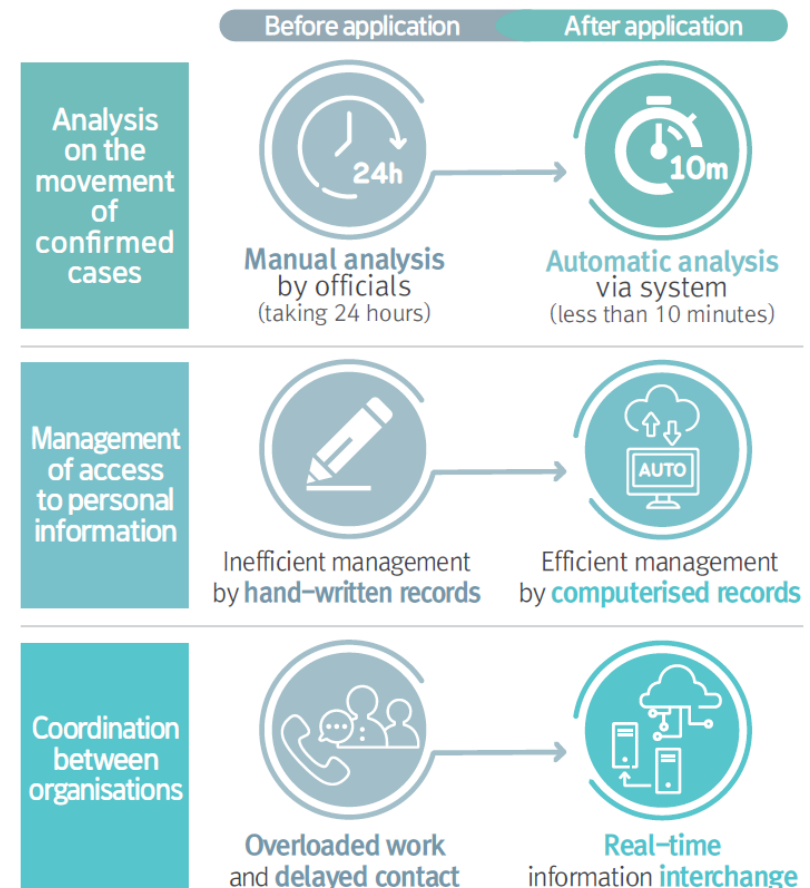
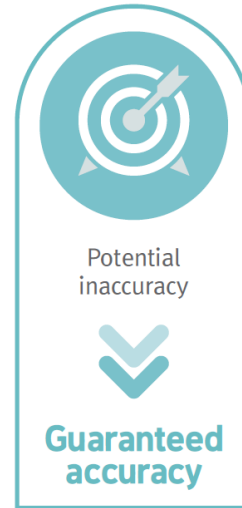
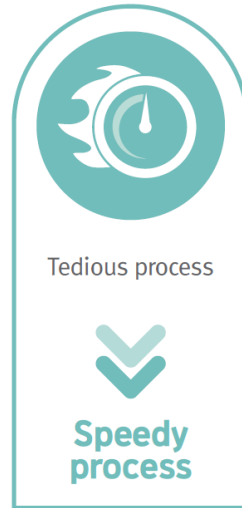
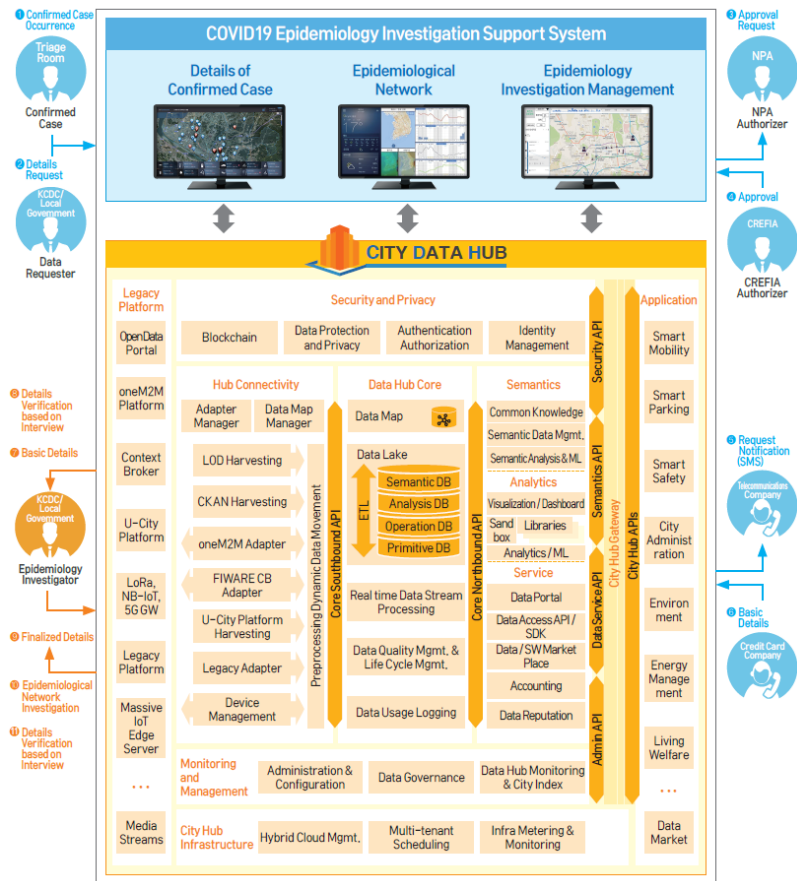
동선추적

1
TEST

2
TRACE

3
TREAT

COVID-19 Epidemiology Investigation Support System

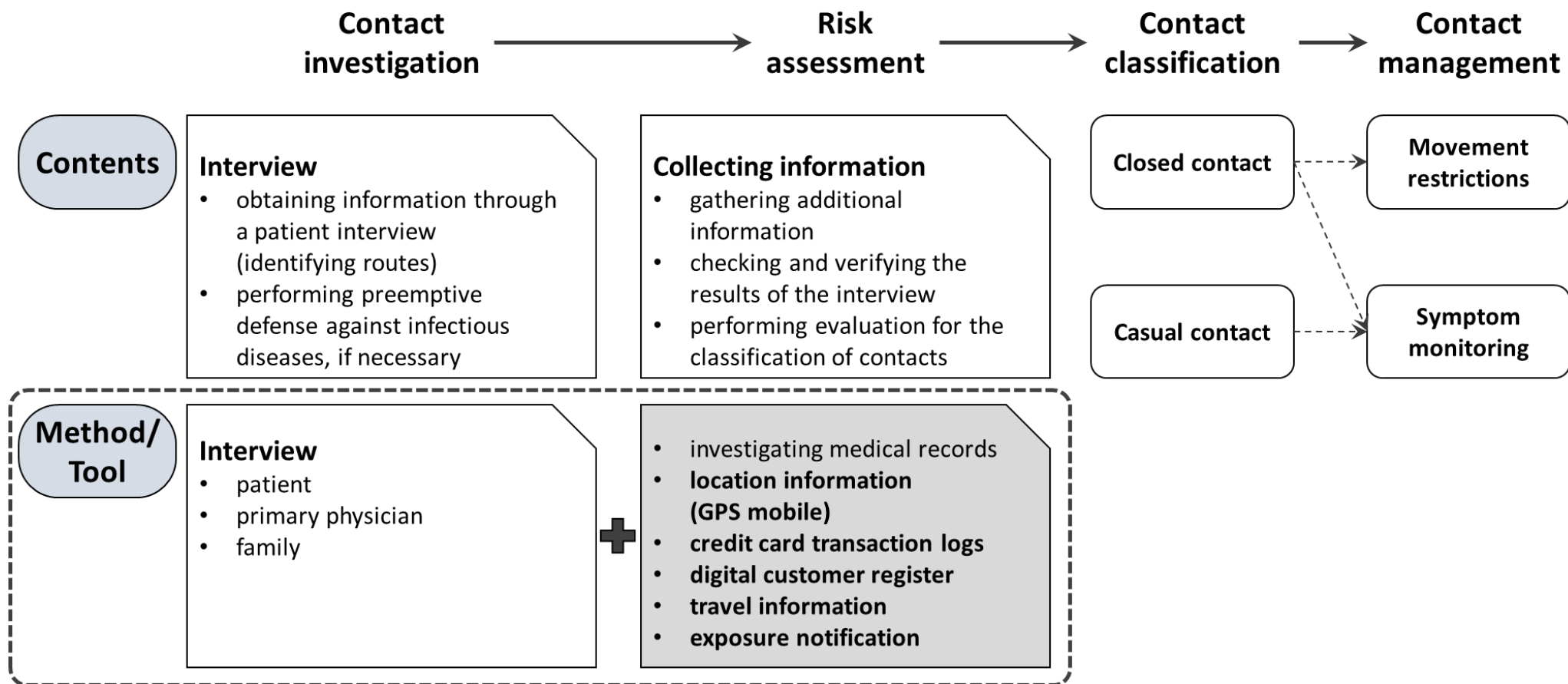


동선추적

1
TEST

2
TRACE

3
TREAT



Part 3 현황

1
TEST

2
TRACE

3
TREAT

ISO/IEC PWI 5153 – 3

City service platform for public health emergencies –
Part 3: Contact tracing

- **현재 상태**

- Pending PWI (일본 반대: 관련 주제가 ISO/TC 304에 해당)

- **활동 내역**

- AhG 11 설립 (Gap analysis, 컨비너: 유상근), 2021-09-10
- 갭 분석 보고서 제출, 2021-09-30
- 갭 분석 보고서 검토 및 JTC 1 총회 제출 결정, 2021-10-08

Part 3 현황: 갭 분석 보고서

1
TEST

2
TRACE

3
TREAT

Gap analysis report for potential ISO/IEC PWI 5153-3 (by the works of ISO TC 304/WG 4)

City service platform for public health emergencies – Part 3: Contact tracing

Source: Convenor, AHG 11 (Sangkeun YOO, ETRI/KATS)

Preparation of gap analysis report and further study for the potential project ISO/IEC 5153-3

ISO/TC 304/WG 4 – on going works

- ISO/DIS 5258, Pandemic response (Respiratory) – Drive-through screening station
 - Standardization of operating procedures of screening stations that can minimize cross-infection by measuring body temperature and quickly collecting samples while the test subject stays in a vehicle that is an independent space

ISO/TC 304/WG 4 – on going works

- ISO/DIS 5472, Pandemic response (Respiratory) – Walk-through screening station
 - Standard protocols of walk-through screening stations that the test subject moves on foot and undergoes an examination
 - Requirements and guideline for negative pressurized medical container

ISO/TC 304/WG 4 – on going works

- ISO/CD 5741, Pandemic response – Temporary Medical Facilities
 - Operating procedures of a temporary medical facilities that solve the problem of shortage of beds due to the rapid increase in infectious diseases and provides life support and treatment services for patients with mild symptoms

ISO/TC 304/WG 4 – on going works

- ISO/AWI 6028, Pandemic response – Self-symptom checker
 - Functional requirements for a self-initiated disease symptom checker to be used for early screening and control for pandemics such as Covid-19

ISO/TC 304/WG 4 – on going works

- ISO/AWI 6763, Pandemic response – Social distancing and source control
 - Guidelines for personal hygiene management and social distancing in pandemic situation
 - Criteria to be followed by users and managers by social distancing guidelines
 - Non-pharmacological countermeasures to minimize contact between individuals and groups, etc.

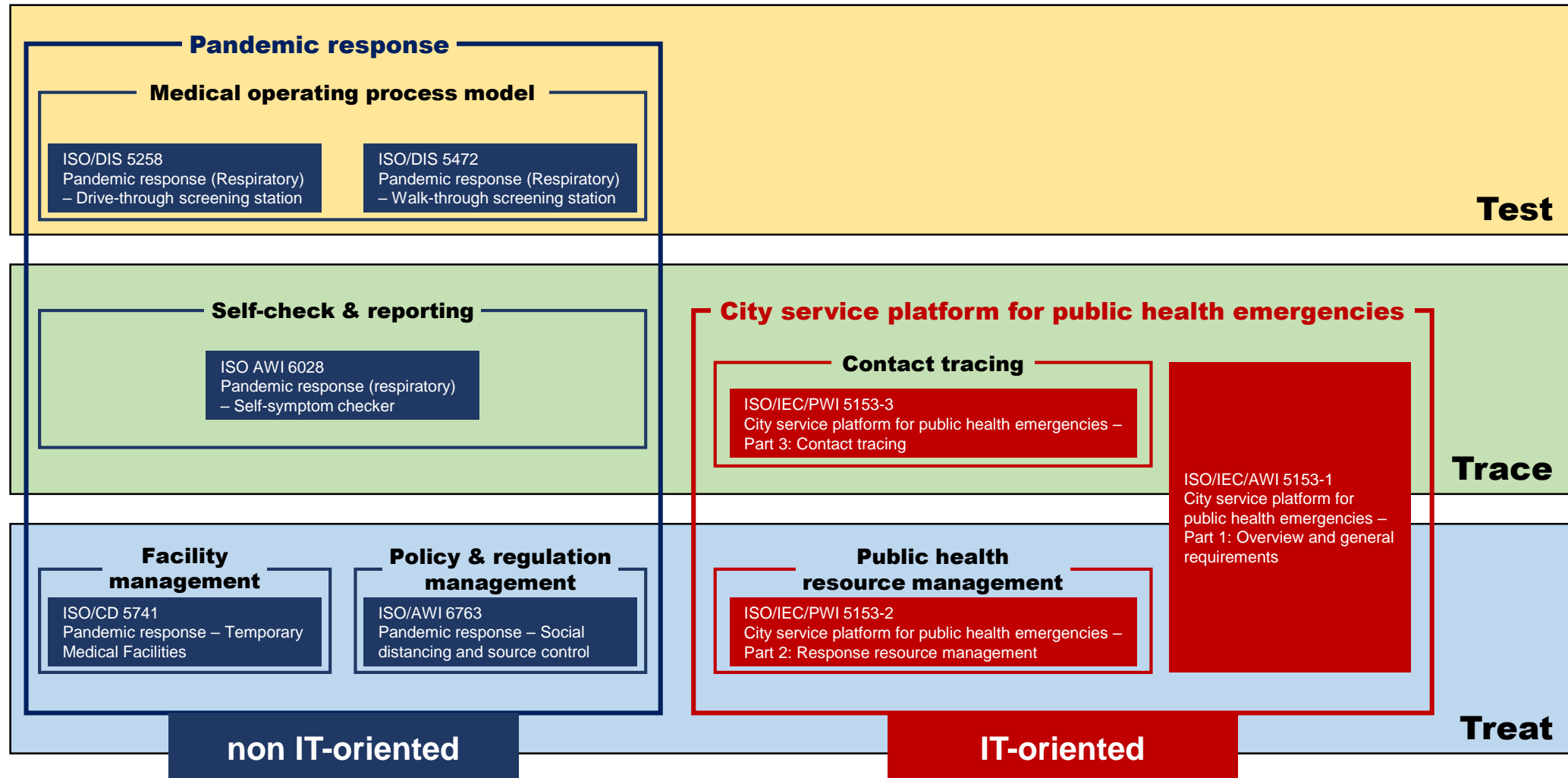
Part 3 현황: 갭 분석 보고서

1 TEST

2 TRACE

3 TREAT

■ JTC 1/WG 11 works
■ TC 304/WG 4 works



방역물품, 동선추적 - 표준화 현황

1
TEST

2
TRACE

3
TREAT

국내 위원회 (JTC 1/WG 11-K) 검토

- 국내 위원회(WG11전문위원회) 대상 제안 발표('21.5)

WG 11 국제표준화

- WG 11 제안 발표 완료('21.6):
ISO/IEC 5153 City service platform for public health emergencies –
Part 2: Response resource management, Part 3: Contact tracing
- JTC 1 PWI 승인 요청('21.7)



향후 계획

- NP/WD 보완 및 WG 11 검토 ('21.12)
- WG 11 발표 및 NP 제안 ('21.12)
- 표준화 트랙 : IS

Q & A